

INFRARED SELFIE!

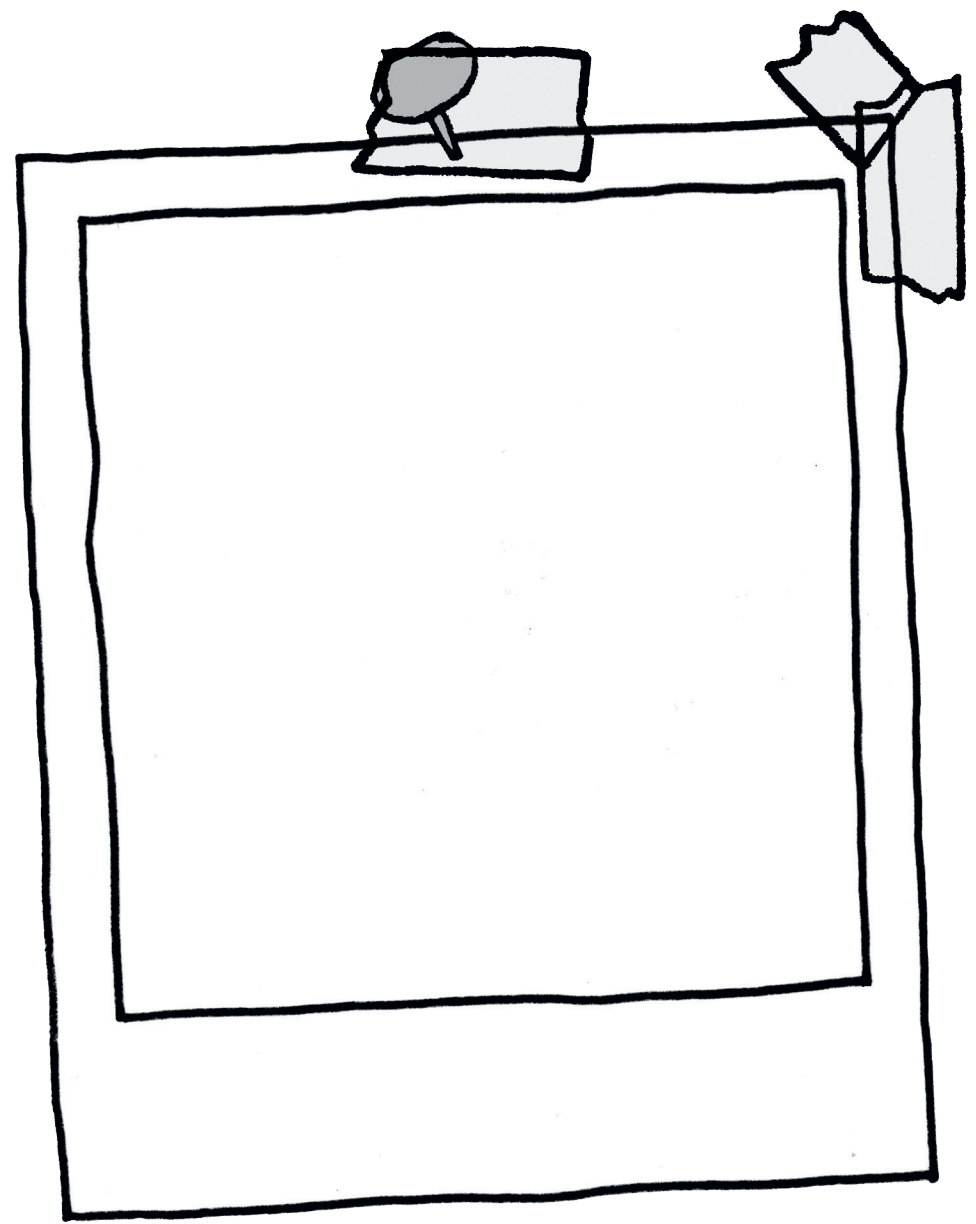
Imagine being able to see things that are invisible. The Webb telescope will reveal new things about the Universe by detecting infrared light. This is a type of light which our eyes can't see, like ultraviolet light which causes sunburn. Our bodies can detect infrared light as heat. Draw a self-portrait in infrared and see what it reveals about you!



Hi space observers!
I'm Martyn Wells, an optical engineer working on Webb. Let's see what you look like in infrared. Create a colour scale that represents cold to hot, using any colours you like. Then draw your portrait using these colours to show the parts of your face that are hotter and cooler.



Zap to see infrared pictures then draw your own!



Colour Scale

